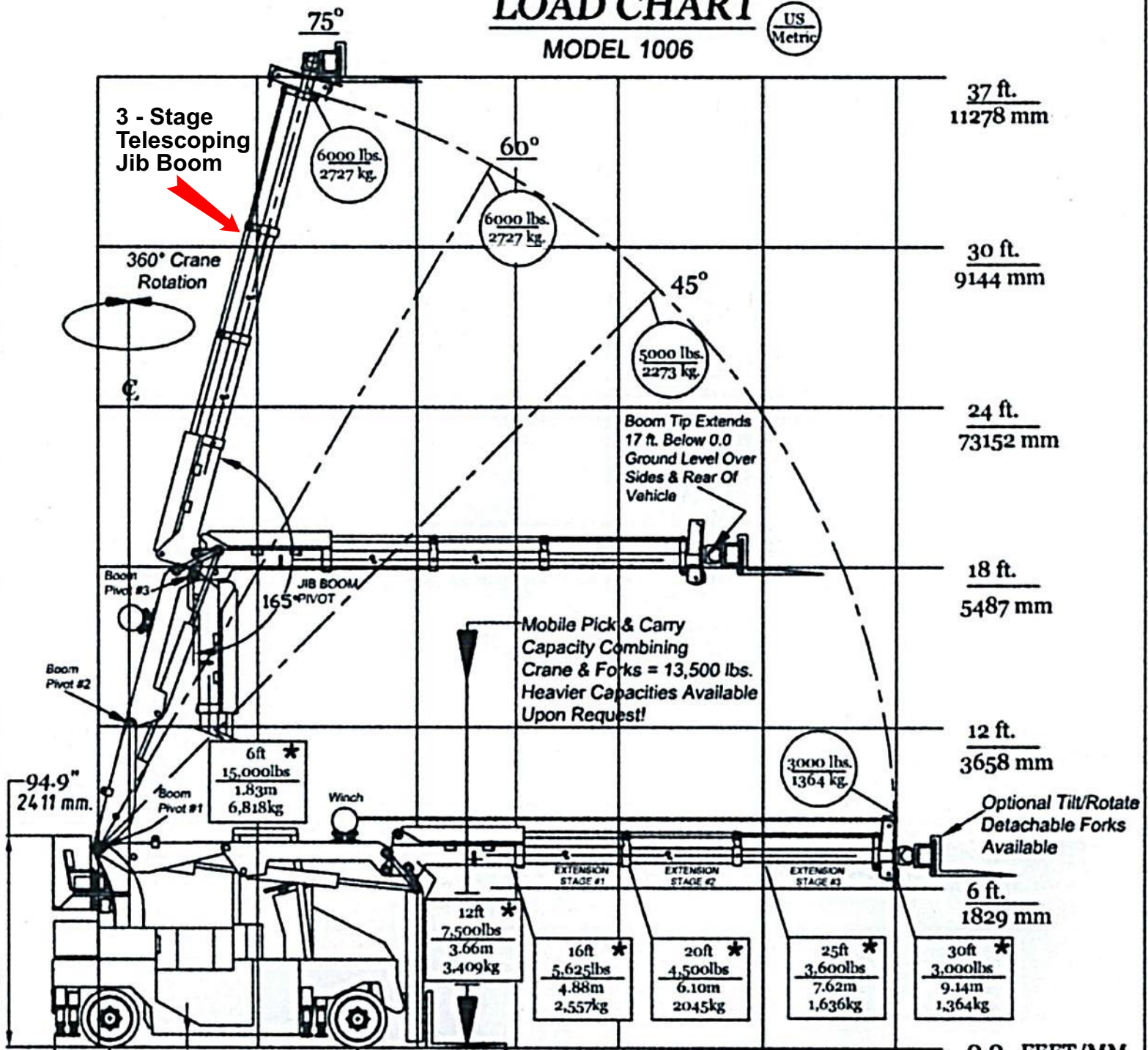


LOAD CHART

MODEL 1006



0	5.9" / 150 mm	6 ft. / 1829 mm	12 ft. / 3658 mm	16 ft. / 4877 mm	20 ft. / 6096 mm	25 ft. / 7620 mm	30 ft. / 9144 mm
106"/112" WB / 2693 mm. 2845 mm.							
167.7" (With Fold-Up Forks) / 4260 mm.		36" / 915 mm.					
203.7" (With "Stationary", Non-Fold-Up Forks) / 5174 mm.							

WINCH LIFTING CAPACITY

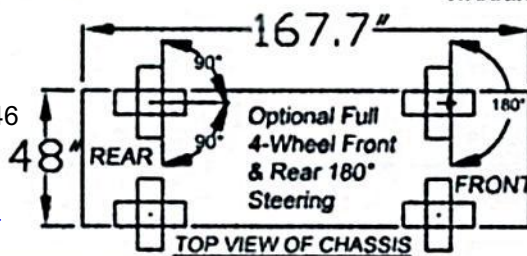
NOTE: Winch Capacities Based On 6,000 Pound Line Pull. Consult Factory For Larger Winch Capacities!

* = Hydraulic Lift Capacity Of Crane System, W/O Winch

WARNING: <PRIOR TO OPERATING THE CRANE WITH A 360° BOOM ROTATION, THE OUTRIGGERS & JACKS MUST BE SET IN TO POSITION!>

THE 1006 HAS A LIMITED LATERAL (LEFT/RIGHT SIDES) OPERATING CAPACITY DURING A MOBILE "PICK & CARRY" MODE WITHOUT DEPLOYING THE OUTRIGGERS & JACKS. CONTACT TRASIN FOR DETAILED OPERATING SPECIFICATIONS!

Trasin
 20637 Krick Road
 Walton Hills, Ohio 44146
 Tel: 440-655-3150
 Web: www.trasin.com
 Email: info@trasin.com



- 48 Inch Overall Chassis Width, Outriggers Retracted
- G.V.W. 30,000 Pounds, Unloaded
- Independently Adjustable Outriggers & Jacks